

Xinba™

Advanced XBRL Analyzer

HITACHI
Inspire the Next

Xinba™ is an advanced XBRL tool analyzer and an instance viewer, working as a Microsoft® Excel Add-In. It provides end users the capability to consume XBRL 2.0a and 2.1 compliant financial information directly into Microsoft® Excel by accessing taxonomies and instances stored locally, over the network, or via Web Services on the Internet. With Xinba™, end users can perform examination and analysis on XBRL financial data and generate customized financial reports. Xinba™ runs on all versions of Microsoft® Excel – 2000, XP, and 2003.

Using Microsoft® Excel Interface

Xinba™ is a Microsoft® Excel Add-In. It allows the import of XBRL financial data and the creation of KPI (Key Performance Indicating) graphs in the same manner as using Microsoft® Excel. Further analysis can be performed on the same data using Microsoft® Excel.

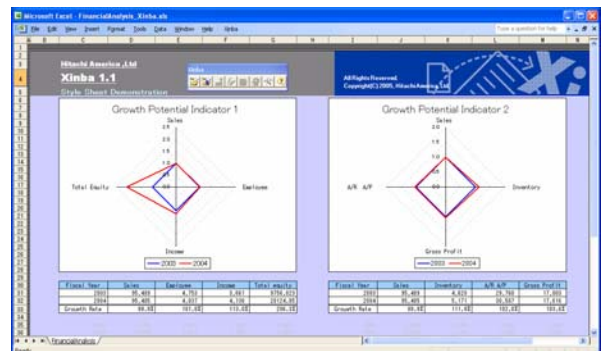
Providing Worksheet Functions

Xinba™ provides XBRL Worksheet Functions, enabling the use of XBRL dataset in an Excel spreadsheet. From balance sheet to cash flow statements or from total sales to sales/recurring, Xinba™ utilizes XBRL dataset to the fullest extent of its capabilities.

Pre-defined & “Create Your Own” Analysis Templates

Xinba™ offers pre-defined templates sets and the ability to customize one's own. With the use of templates, there is no more manual “cut & paste” of data. XBRL dataset can be imported for analysis in a straightforward manner.

	Company Name	Start Date	End Date	
1	altstate	31-Dec-03	31-Dec-03	
2	altstate	31-Dec-03	31-Dec-03	
3	altstate	31-Dec-03	31-Dec-03	
4	altstate	31-Dec-03	31-Dec-03	
5	altstate	31-Dec-03	31-Dec-03	
6	altstate	31-Dec-03	31-Dec-03	
7	altstate	31-Dec-03	31-Dec-03	
8	altstate	31-Dec-03	31-Dec-03	
9	altstate	31-Dec-03	31-Dec-03	
10	altstate	31-Dec-03	31-Dec-03	
11	altstate	31-Dec-03	31-Dec-03	
12	altstate	31-Dec-03	31-Dec-03	
13	altstate	31-Dec-03	31-Dec-03	
14	altstate	31-Dec-03	31-Dec-03	
15	altstate	31-Dec-03	31-Dec-03	
16	altstate	31-Dec-03	31-Dec-03	
17	altstate	31-Dec-03	31-Dec-03	
18	altstate	31-Dec-03	31-Dec-03	
19	altstate	31-Dec-03	31-Dec-03	
20	altstate	31-Dec-03	31-Dec-03	
21	altstate	31-Dec-03	31-Dec-03	
22	altstate	31-Dec-03	31-Dec-03	
23	altstate	31-Dec-03	31-Dec-03	
24	altstate	31-Dec-03	31-Dec-03	
25	altstate	31-Dec-03	31-Dec-03	
26	altstate	31-Dec-03	31-Dec-03	
27	altstate	31-Dec-03	31-Dec-03	
28	altstate	31-Dec-03	31-Dec-03	
29	altstate	31-Dec-03	31-Dec-03	
30	altstate	31-Dec-03	31-Dec-03	
31	altstate	31-Dec-03	31-Dec-03	
32	altstate	31-Dec-03	31-Dec-03	
33	altstate	31-Dec-03	31-Dec-03	
34	altstate	31-Dec-03	31-Dec-03	
35	altstate	31-Dec-03	31-Dec-03	
36	altstate	31-Dec-03	31-Dec-03	
37	altstate	31-Dec-03	31-Dec-03	
38	altstate	31-Dec-03	31-Dec-03	
39	altstate	31-Dec-03	31-Dec-03	
40	altstate	31-Dec-03	31-Dec-03	
41	altstate	31-Dec-03	31-Dec-03	
42	altstate	31-Dec-03	31-Dec-03	
43	altstate	31-Dec-03	31-Dec-03	
44	altstate	31-Dec-03	31-Dec-03	
45	altstate	31-Dec-03	31-Dec-03	
46	altstate	31-Dec-03	31-Dec-03	
47	altstate	31-Dec-03	31-Dec-03	
48	altstate	31-Dec-03	31-Dec-03	
49	altstate	31-Dec-03	31-Dec-03	
50	altstate	31-Dec-03	31-Dec-03	
51	altstate	31-Dec-03	31-Dec-03	
52	altstate	31-Dec-03	31-Dec-03	
53	altstate	31-Dec-03	31-Dec-03	
54	altstate	31-Dec-03	31-Dec-03	
55	altstate	31-Dec-03	31-Dec-03	
56	altstate	31-Dec-03	31-Dec-03	
57	altstate	31-Dec-03	31-Dec-03	
58	altstate	31-Dec-03	31-Dec-03	
59	altstate	31-Dec-03	31-Dec-03	
60	altstate	31-Dec-03	31-Dec-03	
61	altstate	31-Dec-03	31-Dec-03	
62	altstate	31-Dec-03	31-Dec-03	
63	altstate	31-Dec-03	31-Dec-03	
64	altstate	31-Dec-03	31-Dec-03	
65	altstate	31-Dec-03	31-Dec-03	
66	altstate	31-Dec-03	31-Dec-03	
67	altstate	31-Dec-03	31-Dec-03	
68	altstate	31-Dec-03	31-Dec-03	
69	altstate	31-Dec-03	31-Dec-03	
70	altstate	31-Dec-03	31-Dec-03	
71	altstate	31-Dec-03	31-Dec-03	
72	altstate	31-Dec-03	31-Dec-03	
73	altstate	31-Dec-03	31-Dec-03	
74	altstate	31-Dec-03	31-Dec-03	
75	altstate	31-Dec-03	31-Dec-03	
76	altstate	31-Dec-03	31-Dec-03	
77	altstate	31-Dec-03	31-Dec-03	
78	altstate	31-Dec-03	31-Dec-03	
79	altstate	31-Dec-03	31-Dec-03	
80	altstate	31-Dec-03	31-Dec-03	
81	altstate	31-Dec-03	31-Dec-03	
82	altstate	31-Dec-03	31-Dec-03	
83	altstate	31-Dec-03	31-Dec-03	
84	altstate	31-Dec-03	31-Dec-03	
85	altstate	31-Dec-03	31-Dec-03	
86	altstate	31-Dec-03	31-Dec-03	
87	altstate	31-Dec-03	31-Dec-03	
88	altstate	31-Dec-03	31-Dec-03	
89	altstate	31-Dec-03	31-Dec-03	
90	altstate	31-Dec-03	31-Dec-03	
91	altstate	31-Dec-03	31-Dec-03	
92	altstate	31-Dec-03	31-Dec-03	
93	altstate	31-Dec-03	31-Dec-03	
94	altstate	31-Dec-03	31-Dec-03	
95	altstate	31-Dec-03	31-Dec-03	
96	altstate	31-Dec-03	31-Dec-03	
97	altstate	31-Dec-03	31-Dec-03	
98	altstate	31-Dec-03	31-Dec-03	
99	altstate	31-Dec-03	31-Dec-03	
100	altstate	31-Dec-03	31-Dec-03	



Hitachi America, Ltd.

Please visit us online at www.hitachi.us/xbrl

Email: xbrl@hal.hitachi.com

© 2005 Hitachi America, Ltd. All rights reserved.